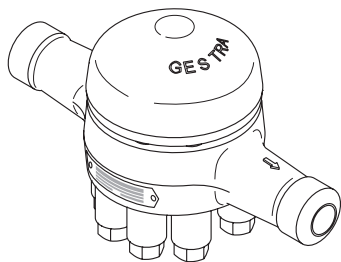




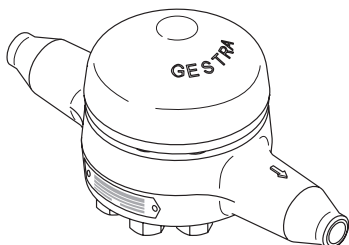
GESTRA



Steam Trap

BK 212 ..

BK 212-ASME



EN
English

Original Installation Instructions
810609-02

	Page
Important Notes	
Usage for the intended purpose	3
Safety note	3
Danger	3
Attention	3
Application of European Directives	3
Note on the Declaration of Conformity / Declaration by the Manufacturer	3
Explanatory Notes	
Scope of supply	4
Description	4
Technical Data	
Name plate / marking	4
Design	
BK 212 ..	5
BK 212-ASME	6
Key	7
Installation	
Attention	8
BK 212 ..	8
Installation instructions	8
Heat treatment of welds	8
Commissioning Procedure	
BK 212 ..	9
Danger	9
Operation	
Thermovit® regulator	9
Maintenance	
Cleaning / exchanging Thermovit® regulator and strainer	10
Tools	10
Tightening torques	10
Spare Parts	
BK 212 ..	11
Spare parts list	1
Decommissioning	
Danger	11
Disposal	11

Important Notes

Usage for the intended purpose

Use steam traps BK 212 ..., BK 212-ASME only for the discharge of condensed water from steam lines or for air venting. Application in steam lines for the discharge of condensate only within the specified pressure and temperature ratings. Check corrosion resistance and chemical suitability for the application in question.

Safety note

The equipment must only be installed and commissioned by qualified and competent staff. Retrofitting and maintenance work must only be performed by qualified staff who – through adequate training – have achieved a recognised level of competence.



Danger

The equipment is under pressure and hot during operation. Risk of severe injuries and burns to the whole body.

Installation and maintenance work should only be carried out when the installation is depressurized (0 bar) and cold (20° C).

The equipment must be isolated and vented from both upstream and downstream pressure before installation or maintenance work is performed.

Sharp edges on internals present the danger of cuts to hands.

Always wear industrial gloves when servicing the equipment.



Attention

The name plate specifies the technical features of the equipment. Do not commission or operate any item of equipment that does not bear its specific name plate.

The pressure and temperature ratings on the name plate of the equipment must meet the requirements of the installation.

Application of European Directives

Pressure Equipment Directive

The equipment conforms to this directive (see „Manufacturer's Declaration“ section) and can be used for the following media: ■ Fluids of group 2

ATEX Directive

The equipment does not have its own potential ignition source and is not subject to this directive (see „Manufacturer's Declaration“ section).

When installed, static electricity may arise between the equipment and the connected system. When used in potentially explosive atmospheres, the plant manufacturer or plant operator is responsible for discharging or preventing possible static charge.

If it is possible for medium to escape, e.g. through actuating mechanisms or leaks in threaded joints, the plant manufacturer or plant operator must take this into consideration when dividing the area into zones.

Note on the Declaration of Conformity / Declaration by the Manufacturer

For details on the conformity of our equipment according to the European Directives see our Declaration of Conformity or our Declaration of Manufacturer.

The current Declaration of Conformity / Declaration of Manufacturer are available in the Internet under www.gestra.de/documents or can be requested from us.

Explanatory Notes

Scope of supply

BK 212..., BK 212 ASME

1 Steam trap BK 212

1 Installation manual

Description

Thermostatic/thermodynamic steam trap with corrosion resistant Thermovit® regulator (bimetallic plates) able to withstand waterhammer. With internal strainer and integral non-return valve action. Asbestos-free body gasket (graphite/CrNi). Installation in any position.

The default factory setting enables the steam trap to discharge condensate with virtually no banking-up.

Technical Data

Name plate / marking

The temperature/pressure ratings are indicated on the body or on the name plate. For more information see GESTRA technical documents such as data sheets and the Technical Information.

The name plate or the body indicates the type and design:

- ▶ Name/logo of the manufacturer
- ▶ Type designation / material number
- ▶ Pressure class PN or Class
- ▶ Material number
- ▶ Max. temperature
- ▶ Max. pressure
- ▶ Direction of flow
- ▶ Stamp on equipment body / name plate, e. $g \frac{1}{10}$ specifies the quarter and the year of production (example: 1st quarter 2010)

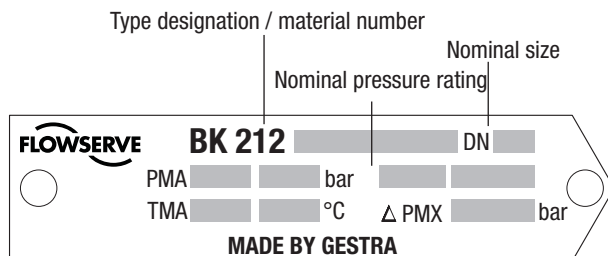


Fig. 1

Component parts BK 212 ..

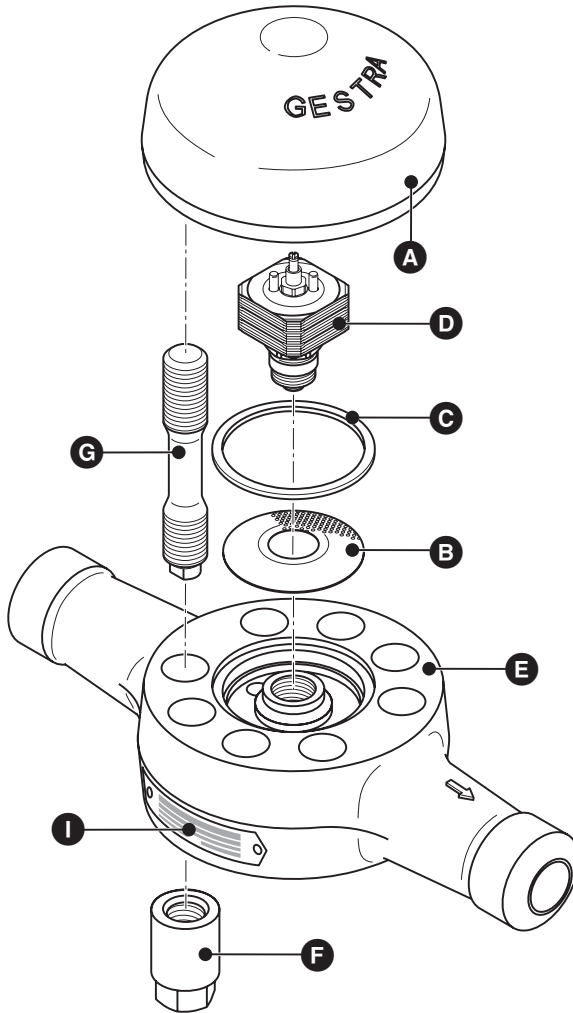


Fig. 2

Component parts BK 212-ASME

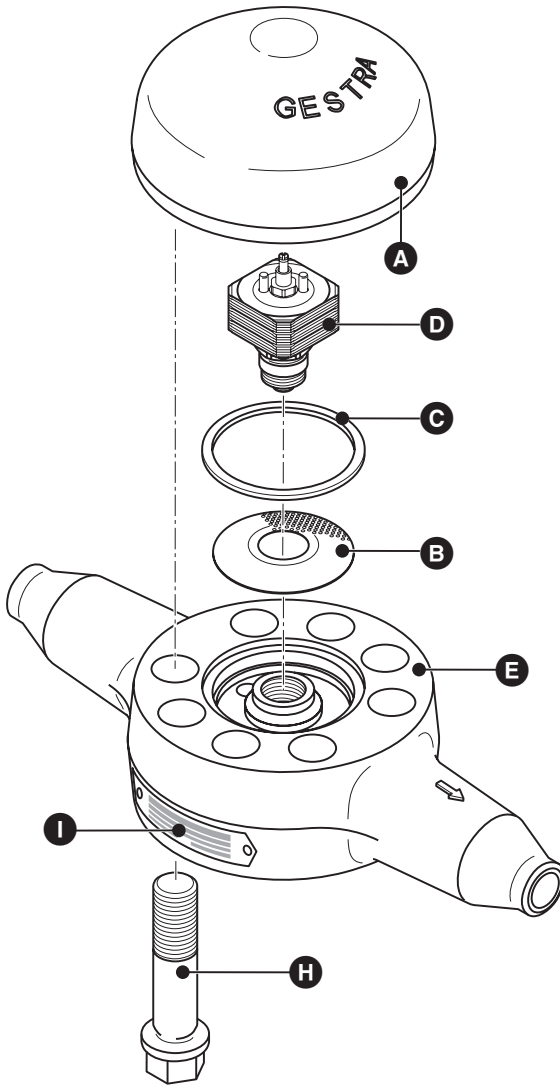


Fig. 3

Key

- A** Cover
- B** Strainer
- C** Gasket
- D** Thermovit®- regulator
- E** Body
- F** Cap nut
- G** Expansion bolt with reduced shank to DIN 2510
- H** Set screws with collar
- I** Name plate

Installation



Attention

- ▶ The nominal size of this equipment is designed for DN 25. Note that the admissible loads (forces, torques) acting on pipe connections with end connections larger than DN 25 are limited to the permissible pipe end loads of a size DN 25 device. Should the pipe end connection loads exceed this limit, take appropriate measures to provide additional support so as to protect the equipment.
- ▶ Welded trap installation should only be performed by qualified welders (certified according to DIN EN 287 or equivalent).
- ▶ We recommend not to insulate the steam trap.

The equipment must be installed so that the flow arrow on the body is pointing in the same direction as the steam flow. Preferred installation of the equipment in horizontal lines with cover at the top.

Installation instructions

1. Make sure that the flow arrow on the equipment body matches the direction of flow of the steam.
2. Consider space required for servicing the equipment. When the equipment is installed a minimum space of at least **150 mm** (BK 212 ..) or **70 mm** (BK 212-ASME) is required for removing the cover **A**.
3. Remove plastic plugs. They are **only** used for transit protection.
4. Clean end connections.
 - 5.1 Install equipment with releasable end connections (e. g. flanges).
 - 5.2 For equipment with socket-weld ends or butt-weld ends: Apply arc welding processes 111 and 141 according to ISO 4063 (or equivalent standard).

Heat treatment of welds

After welding the steam trap in place a heat treatment of the welds is required (stress-relief annealing to DIN EN 100529). The heat treatment must be restricted to the immediate area of the weld.

Commissioning Procedure

Make sure that all connections are subjected to a suitable pressure test according to the pertinent rules and regulations.



Danger

The equipment is under pressure and hot during operation. Risk of severe injuries and burns to the whole body.

Installation and maintenance work should only be carried out when the installation is depressurized (0 bar) and cold (20° C).

The equipment must be isolated and vented from both upstream and downstream pressure before installation or maintenance work is performed.

Sharp edges on internals present the danger of cuts to hands.
Always wear industrial gloves when servicing the equipment.

Operation

Thermovit® regulator

The factory setting of the Thermovit® regulator ensures that the equipment is steam-tight when closed and opens just before the pressure-dependent boiling temperature is reached.

Periodic testing and maintenance of the equipment is recommended to ensure proper functioning. Continuous monitoring is recommended for critical applications.

Cleaning / exchanging Thermovit® regulator and strainer

1. Remove cover **A** from body **E**. Fig. 2, Fig. 3
2. Remove Thermovit® regulator **D** using an open-end spanner (US: wrench).
3. Unscrew Thermovit® regulator **D** and take off strainer **B**.
4. Clean body, regulator, cover and strainer.
5. Clean sealing surfaces and insert new gasket **C**.
6. Clean seating surfaces of body **E** and Thermovit® regulator **D**.
7. Clean and insert strainer **B**.
8. Mount regulator **D** and tighten it with a torque of **100 Nm**.
9. Apply heat-resistant lubricant (e. g. OKS 217®) to expansion bolt with reduced shank **G**.
10. Replace cover **A**, insert expansion bolts with reduced shank **G**, mount cap nuts **F** and tighten them with **225 Nm** in diagonally opposite pairs.
11. Replace cover **A**, insert set screw with collar **H** (ASME design) and tighten it with **225 Nm** in diagonally opposite pairs.

Tools

- ▶ Combination spanner A. F. 11 mm, DIN 3113, form B
- ▶ Combination spanner A. F. 24 mm, DIN 3113, form B
- ▶ Torque spanner (US: torque wrench) 6 - 50 Nm, ISO 6789
- ▶ Torque spanner (US: torque wrench) 80 - 400 Nm, ISO 6789

Tightening torques

Item	Designation	Torque for tightening [Nm]
D	Thermovit® regulator	100
G	Stud bolt with reduced shank	20
F	Cap nut	225
H	Set screw with collar	225

All torques indicated in the table are based at a room temperature of 20 °C.

BK 212 .., BK 212-ASME

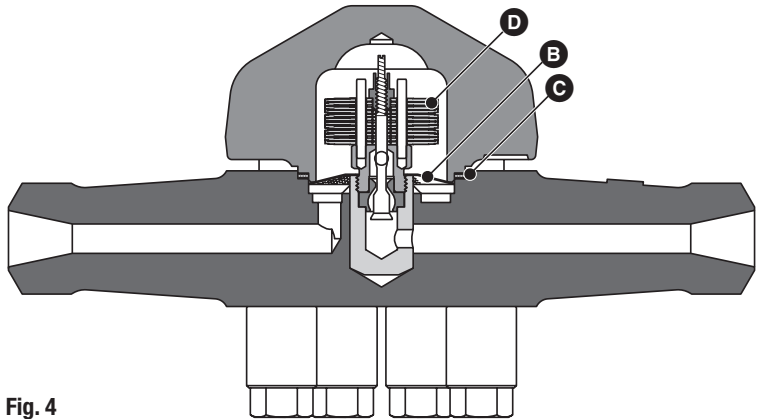


Fig. 4

Spare parts list

Item	Designation	Stock code #
D	Thermovit® regulator, complete, including gasket C	371862
C	Gasket (graphite/1.7335)	374009
B	Strainer	096345

Decommissioning



Danger

The equipment is under pressure and hot during operation. Risk of severe injuries and burns to the whole body.

Installation and maintenance work should only be carried out when the installation is depressurized (0 bar) and cold (20° C).

The equipment must be isolated and vented from both upstream and downstream pressure before installation or maintenance work is performed.

Sharp edges on internals present the danger of cuts to hands.

Always wear industrial gloves when servicing the equipment.

Disposal

For the disposal of the equipment observe the pertinent legal regulations concerning waste disposal.



GESTRA

You can find our authorised agents around the world at: www.gestra.com

UK and ROI

Flowserve GB Limited (GESTRA Division)

Unit 1 Sopwith Park
Royce Close
West Portway Business Park
Andover, Hampshire SP10 3TS
Tel. 0044 16 35 / 46 99 9
Fax 0044 16 35 / 3 60 34
E-Mail gestraSalesUK@flowserve.com
Web www.flowserve.com

South Africa

Flowserve SA (Pty) Ltd.

Unit No. 1
Director Road
Spartan Extension 2
Kempton Park 1613
Tel. 0027 11 / 9 23 73 00
Fax 0027 11 / 9 74 64 20
E-Mail tvniekerk@flowserve.com
Web www.flowserve.com

Singapore

Flowserve Pte. Ltd.

12 Tuas Avenue 20
Singapore 638824
Tel. 0065 / 68 79 89 00
Fax 0065 / 68 62 49 40
Web www.flowserve.com

USA

Flowserve Corporation GESTRA Division

4001 Flowserve Way, Suite 300
Pasadena, TX 77503-2651
Tel. 001 713 / 286-3100
Fax 001 281 / 479-0081
E-Mail fcd-gestra-usa@flowserve.com
Web www.flowserve.com

GESTRA AG

P. O. Box10 54 60, D-28054 Bremen
Münchener Str. 77, D-28215 Bremen
Telephone 0049 (0) 421 / 35 03 - 0
Fax 0049 (0) 421 / 35 03 - 393
E mail gestra.ag@flowserve.com
Internet www.gestra.de

